



EDUCATOR EPIC EVENT GUIDE

Help students make the most out of their EPIC experience!

PRE-EVENT

Complete Interest Inventory

View the [EPIC video](#)

Get the EPIC Texting Service



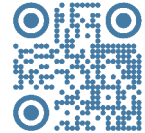
Choose at least three different career clusters & activities to visit.

[Learn more about all things EPIC!](#)

[Cluster Activities](#)



[Event Map](#)

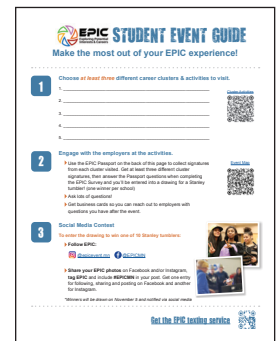


EPIC EVENT DAY

Event Day

- ▶ Students should use the **EPIC Student Guide/Passport** sheet to collect signatures from each cluster visited. Get at least three different cluster signatures, then answer the Passport questions when completing the EPIC Survey to be entered into a drawing for a **Stanley tumbler!** (one winner per school)
- ▶ Encourage students to ask lots of questions and get business cards so then can reach out to employers with questions after the event.

EPIC Student Guide/Passport (pdf emailed to schools)



Student Social Media Contest

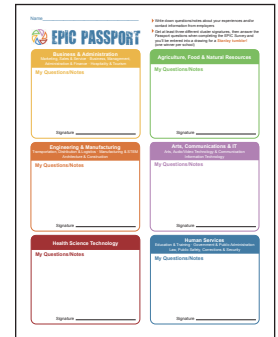
To enter the drawing to win one of 10 Stanley tumblers:

▶ Follow EPIC:



▶ Share your EPIC photos on Facebook and/or Instagram, tag EPIC and include #EPICMN in your post. Get one entry for following, sharing and posting on Facebook and another for Instagram.

**Winners will be drawn on November 5 and notified via social media*



POST-EVENT

Complete the appropriate EPIC Event Survey



[Student Survey](#)



[Educator Survey](#)

Share a reflection or “aha” moment with a counselor, teacher or parent

Review [EPICConnect](#) to learn about local employers and how they can support your career exploration experience.

Review Careerwise or MCIS to analyze results/interests after EPIC and identify any changes.

Review class schedules to infuse classes related to career field of choice or discuss career exploration in more depth.

Check out the [EXPLORING website](#) to learn about opportunities to visit local businesses and participate in hands-on activities that authentically show what it is to be a part of a specific career.

